



FORMWORK & SCAFFOLDING EXPERT  
ECO-SMART CONSTRUCTION  
1+N INTEGRATED SOLUTIONS

CHINESE LISTED COMPANY

STOCK CODE: SZ 300986

# INFRASTRUCTURE SOLUTIONS

基建解决方案



# CONTENTS 目录

## 01 ABOUT GETO 企业介绍

About GETO	P4	企业介绍
Development History	P6	发展历程
Production Strength	P8	生产实力
Industrial Digitization	P10	产业数字化
Integrated Product Solutions	P12	一站式产品解决方案
Whole-Chain Services	P13	全链条服务
Certifications	P14	资质认证

---

## 02 BRIDGE SOLUTIONS 桥梁解决方案

Temporary Road	P17	临时道路
Pile Cap	P18	承台施工
Pier	P19	墩柱施工
Bent Cap	P20	盖梁施工
Girder	P21	桥梁施工
Precast	P23	预制模具

---

## 03 TUNNEL SOLUTIONS 隧道解决方案

Arched Tunnel	P25	拱形隧道
Box Tunne	P25	箱型隧道
Circle Tunnel	P26	圆形隧道
Prefabricated Tunnel Components	P26	隧道预制构件

## 04 HYDRAULIC ENGINEERING SOLUTIONS 水利解决方案

Climbing Formwork For Dam	P28	大坝爬升模板
Climbing Formwork For Shaft	P28	竖井爬模
Slip Formwork For Shaft	P29	竖井滑模
Hoisting Cantilever Support Formwork	P29	吊装悬臂支架模板
Dam Automatic Lifting Cantilever Formwork	P29	大坝自动提升悬臂模板

---

## 05 HIGHWAY SOLUTION 高速公路解决方案

Highway Galvanized Corrugated Guardrail	P31	高速公路镀锌波形护栏
---	-----	------------

---

## 06 PROJECT CASES 项目案例

P37

## 07 SERVICES 服务

P52

## ABOUT GETO 企业介绍

GETO Group is mainly engaged in Green new building formwork and scaffolding (aluminium formwork, steel formwork, steel-framed timber formwork, climbing systems, fair-faced concrete formwork, and infrastructure formwork and scaffolding products), Prefabricated buildings (steel structures and PC), Modular housing (steel structures and PC), and Construction & decoration materials (tiles, doors & windows, lighting, custom furniture, etc.)

GETO also provides New energy including the investment, EPC construction, and operation of commercial and industrial "Photovoltaics, Storage, and Charging" projects, while providing the "Green Energy Future Living" one-stop residential energy solution.

In 2021, GETO was listed on the ChiNext board of the Shenzhen Stock Exchange in China (Stock Code: SZ 300986). We have established 12 production bases globally and registered the "GETO®" international trademarks in 32 countries and regions, with products and services reaching worldwide markets.

志特集团主营绿色新型建筑模架（铝模、钢模、钢框木模、爬升式模架、清水混凝土模架及公基建专用模架）、装配式建筑（钢结构与PC）、模块化房屋（钢结构与PC），以及各类结构和装修建筑材料（瓷砖、门窗、灯饰、定制家具等）。

志特还提供相关新能源，包括工商业“光、储、充”项目投资、EPC建设、运维，“绿能未来居”一站式家庭能源解决方案。

“志特新材”于2021年在A股创业板上市（股票代码：SZ 300986），目前已在全球设立12大生产基地，在32个国家和地区注册了“GETO®”国际商标，产品和服务遍及全球。



## DEVELOPMENT MILESTONES 发展历程

**2011**  
GETO Jiangxi  
Established  
江西志特成立



**2014**  
First Overseas Order  
第一个海外订单



**2015**  
GETO Malaysia  
Established  
马来西亚志特成立



**2016**  
GETO Singapore  
Established  
新加坡志特成立



**2018**  
GETO Global  
Management  
Headquarters Set in  
the Greater Bay Area  
志特全球管理总部落  
成粤港澳大湾区



**2021**  
IPO listed on the  
Shenzhen Stock  
Exchange (ChiNext,  
Stock Code: SZ 300986)  
深交所创业板 IPO 上市  
(股票代码: SZ 300986)



**2023**  
GETO Macau  
Established  
中国澳门志特成立



**2024**  
GETO Saudi Arabia  
Established  
沙特阿拉伯志特成立

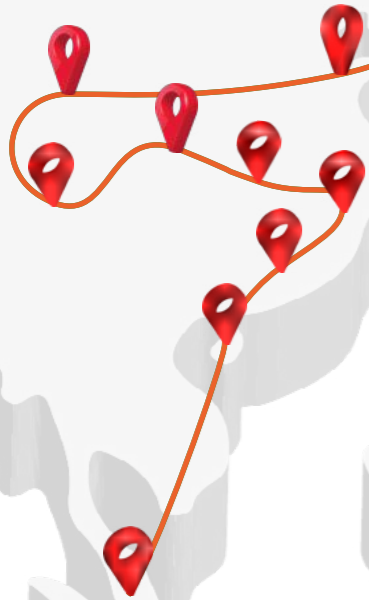


**2025**  
GETO Kazakhstan  
Established  
哈萨克斯坦志特成立  
  
GETO Hong Kong  
International Center  
Established  
志特中国香港国际中心成立



## PRODUCTION STRENGTH 生产实力

ANNUAL PRODUCTION CAPACITY / 年产能:  
**5,000,000 m<sup>2</sup>**



Jiangmen Factory  
广东江门



Guangchang Factory I  
江西广昌 I



Guangchang Factory II  
江西广昌 II



Huizhou Factory  
广东惠州



Weifang Factory  
山东潍坊



Tongnan Factory  
重庆潼南



Dingxi Factory  
甘肃定西



Lingao Factory  
海南临高



Xianning Factory  
湖北咸宁



Nilai Factory, Malaysia  
马来西亚森美兰州



Singapore Factory  
新加坡工厂



Saudi Arabia Factory  
沙特工厂



## INDUSTRIAL DIGITIZATION 产业数字化

### GETO INTELLIGENT MANUFACTURING / 智能化制造

Intelligent manufacturing greatly enhances efficiency, including independent R&D of the existing formwork renovation production line, formwork automation production line, robot welding, and friction stir welding (FSW).

智能化制造极大提升了效率，包括自主研发模板改造生产线、模板自动化生产线、机器人焊接、搅拌摩擦焊接（FSW）等。



FRICITION STIR WELDING (FSW) / 搅拌摩擦焊



GETO AUTOMATIC PRODUCTION LINE / 自动化生产线



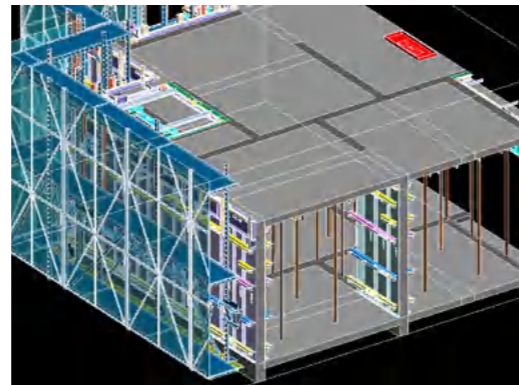
ROBOT WELDING / 机器人焊接

## INDUSTRIAL DIGITIZATION 产业数字化

### SELF-DEVELOPED SOFTWARE / 自主研发软件

#### GETO-BIM AUTOMATIC MODULATION SOFTWARE

This software enhances design efficiency and reduces errors, eliminating the need for factory preassembly and enabling faster on-site installation.

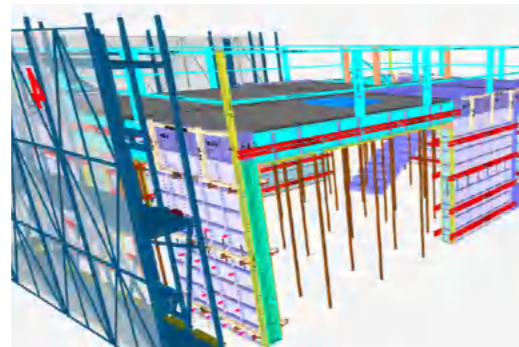


#### “工业化 BIM 设计”系统

产品设计“零缺陷”，精准高效，可免除工厂试组装环节，现场安装更快。

#### GETO 3D MODEL MEMORY OPTIMIZATION VISUALIZATION PLATFORM

The QR code on each panel helps locate materials quickly, enabling workers to assemble the formwork accurately on site.



#### 3D 轻量化可视平台

每块模板上的 QR 码有助于快速定位，使工人能够在现场准确组装模板。

#### GETO-VR INSPECTION SOFTWARE

Enables remote virtual inspections, saving customers the need for factory or on-site acceptance.



#### “VR 虚拟远程验收”系统

实现远程虚拟检测，为客户节省工厂或现场验收的需要。

## DIGITAL MANAGEMENT / 数字管理

### GT-MS INFORMATION MANAGEMENT SYSTEM

Integrates sales, design, supply chain, engineering, and finance into a unified data management platform, enabling comprehensive data analysis and risk monitoring.

#### GT-MS 信息化管理系统

将销售、设计、供应链、工程、财务等多个业务板块整合为统一的数据管理平台，实现全面的数据分析和风险监控。



### MATERIAL CODING SCAN MANAGEMENT SYSTEM

Utilizes PDA scanning for real-time warehouse material management based on BIM system outputs.

#### 物资编码扫码管理系统

根据“BIM 设计”系统输出的 BOM，对物资进行统一编码，通过 PDA 快速扫码，实现实时仓储物资的查询和管理。



## INTEGRATED PRODUCT SOLUTIONS

### 一站式产品解决方案

GETO offers one-stop package solutions for its product and service offerings. Products in GETO's one-stop package include the building formwork and scaffolding product series, prefabricated building product series, fair-faced concrete project series, photovoltaic new energy, and infrastructure formwork.

志特为其产品和服务提供一站式解决方案，产品包括：建筑模板及脚手架产品系列、装配式建筑产品系列、清水混凝土工程系列、光伏新能源、基础设施模板等。

## WHOLE-CHAIN SERVICES

### 全链条服务

GETO's whole-chain service offerings include on-site assistance, logistics, design and consultation, monitoring and measuring services. Our service team is diverse, with staff from different ethnicities and languages.

志特提供全链条服务，包括现场工程协助、物流、设计和咨询、监测和测量服务。我们的服务团队多元化，员工来自不同的种族和语言。



# CERTIFICATIONS 资质认证

GETO holds various certifications, ensuring compliance with international standards and reinforcing its commitment to quality and innovation.

志特拥有多项认证，确保符合国际标准，并加强对质量和创新的承诺。



Band 2 Certificate



BisSAFE Level 3 Certificate



CIBD G7 Certificate



ISO 14001



ISO 45001



ISO 9001



CIBD Reusable Formwork System PPSi



CCCI Product Carbon Footprint Verification Statement  
CCCI 产品碳足迹核证声明



China Green Building Materials Certification Certificate  
中国绿色建材产品认证证书

# BRIDGE SOLUTIONS 桥梁解决方案



## TEMPORARY ROAD 临时道路

### Temporary Steel Bridge 钢栈桥

Using steel pipe piles, beret beams, I-beams, bridge deck plates and protection components, the construction access is quickly built on rivers and beaches.  
使用钢管柱、贝雷梁、工字钢、桥面板及防护组件，在河流、滩涂上快速搭建施工通道。

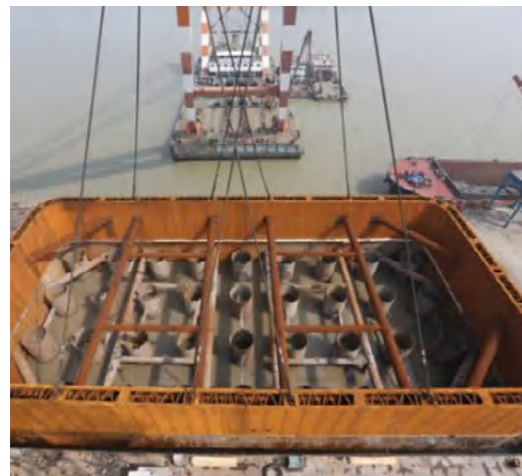
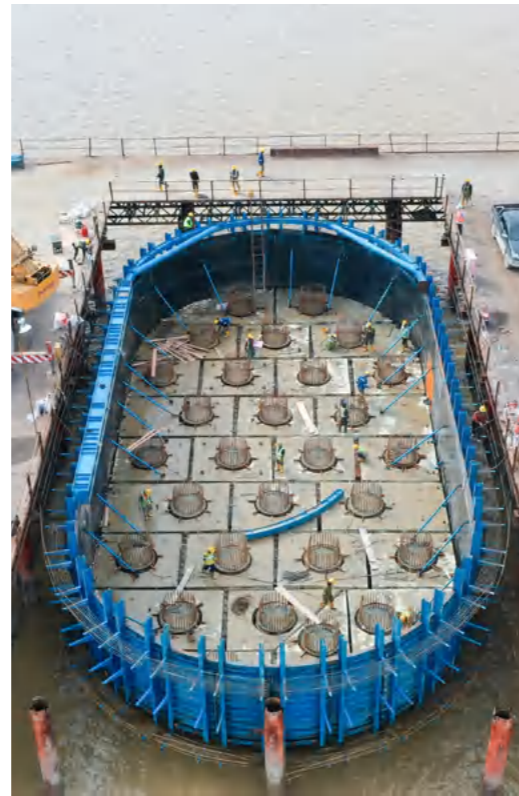


## PILE CAP 承台施工

### Steel Cofferdam 钢围堰

We provide prefabricated steel cofferdam, which can be shipped in containers and can be easily disassembled.

我们可以提供模块化装配式钢围堰，以便拆散装进集装箱运抵施工现场。



### Bottomless Steel Box Cofferdam 无底钢套箱

Suitable for low pile cap and the cofferdam is inserted directly into the bottom of the riverbed.

适用于低桩承台，围堰直接插入河床底部。



### Steel Box Cofferdam with Bottom 有底钢套箱

Suitable for high pile cap and the cofferdam is hanged on the pile foundation.

适用于高桩承台，围堰悬挂在桩基上。

## PIER 墩柱施工

We can provide all kinds of formwork for pier construction, including steel formwork and climbing formwork.

对于墩柱施工，我们可以提供各类墩柱施工的模板，包括钢模板以及爬升模板。



### Steel Formwork for Pier 墩柱钢模板

Suitable for low height pier and lifting equipment can be used.

适用于高度较低，可以使用吊装设备的墩柱。



### Climbing Formwork for Pier 墩柱爬模

Suitable for high height piers.

适用于高度较高的墩柱。

## BENT CAP 盖梁施工

We can provide steel formwork and operation platform for bent cap construction.  
对于盖梁施工，我们可以提供盖梁钢模板以及盖梁施工操作平台。



**Steel Formwork for Bent Cap**  
盖梁钢模板

### Operation Platform for Bent Cap 盖梁施工平台

The modular operation platform can be lifted and installed and dismantled as a whole after the assembly is completed.  
模块化的操作平台，组装完成后可整体的吊装安装和拆除，便于周转。



**Bolt Clamp**  
抱箍

It can be used on circular pier to support the bent cap.  
抱箍可以用在圆形墩柱上，作为盖梁的支撑。



## GIRDER 桥梁施工

For bridge girder construction, there can be multiple solutions and corresponding products available, including simple supported beam, continuous beams, composite steel and concrete beams, and arch bridges.  
对于各类桥梁施工，我们可以提供多种解决方案和对应产品，包括简支梁、连续梁、钢混组合梁、拱桥。

### Simple Supported Beam(CIS) 简支梁施工（现浇）



**Ringlock Scaffold**  
盘扣支架

Suitable for relatively flat terrain with a certain bearing capacity of the foundation.  
适用于较平坦场地，地基有一定的承载力。



**Beret Beam Support**  
贝雷梁支架

Suitable for bridges crossing roads, rivers where the support needs reserve passage holes.  
适用于跨越道路、河流等情况的桥梁，支架需要预留通行孔。

Suspended Beam 悬臂梁



**Heavy Duty Bracket**  
重型悬臂托架

Used for 0# segment of suspended beam.  
用于悬臂梁 0# 节段现浇施工。



**Balanced Cantilever Carriage**  
挂篮

Used for cantilever segment construction.  
用于悬臂节段施工。

Arch Bridge 拱桥



**Cantilever Carriage for Arch Bridge**  
拱桥挂篮

Used for reinforced concrete arch construction.  
用于钢筋混凝土拱圈施工。



**PRECAST**  
预制模具

We can provide precast molds for prefabricated bridge components, including prefabricated pier, prefabricated bent cap, prefabricated box girders, prefabricated U-shaped girders, prefabricated T-beams, and prefabricated segmental assembly beams.

我们可以提供桥梁施工需要用到的预制模具，包含预制墩柱、预制盖梁、预制箱梁、预制 U 型梁、预制 T 梁、预制节段拼装梁。

Prefabricated Bridge Components 桥梁预制构件



**Prefabricated Bent Cap**  
预制盖梁



**Prefabricated Box Girder (Hydraulic)**  
预制箱梁 (液压)



**Prefabricated Box Girder**  
预制箱梁



**Prefabricated T-beam**  
预制 T 梁



**Prefabricated U-beam**  
预制 U 梁



**Prefabricated Segmental Assembly Beams**  
预制节段拼装箱梁

**TUNNEL  
SOLUTIONS**  
隧道解决方案



**ARCHED TUNNEL**  
拱形隧道



**Steel Formwork Tunnel Trolley**  
钢模体系隧道台车



**Timber Formwork Tunnel Trolley**  
木模体系隧道台车

**BOX TUNNEL**  
箱型隧道



**Steel Formwork Pipe Gallery Tunnel Trolley**  
钢模体系管廊台车



**Timber Formwork Pipe Gallery Tunnel Trolley**  
木模体系台车

## CIRCLE TUNNEL 圆形隧道



Steel Formwork for Circle Tunnel  
圆形隧道钢模板



Circle Tunnel Needle Beam Trolley  
圆形隧道针梁式台车

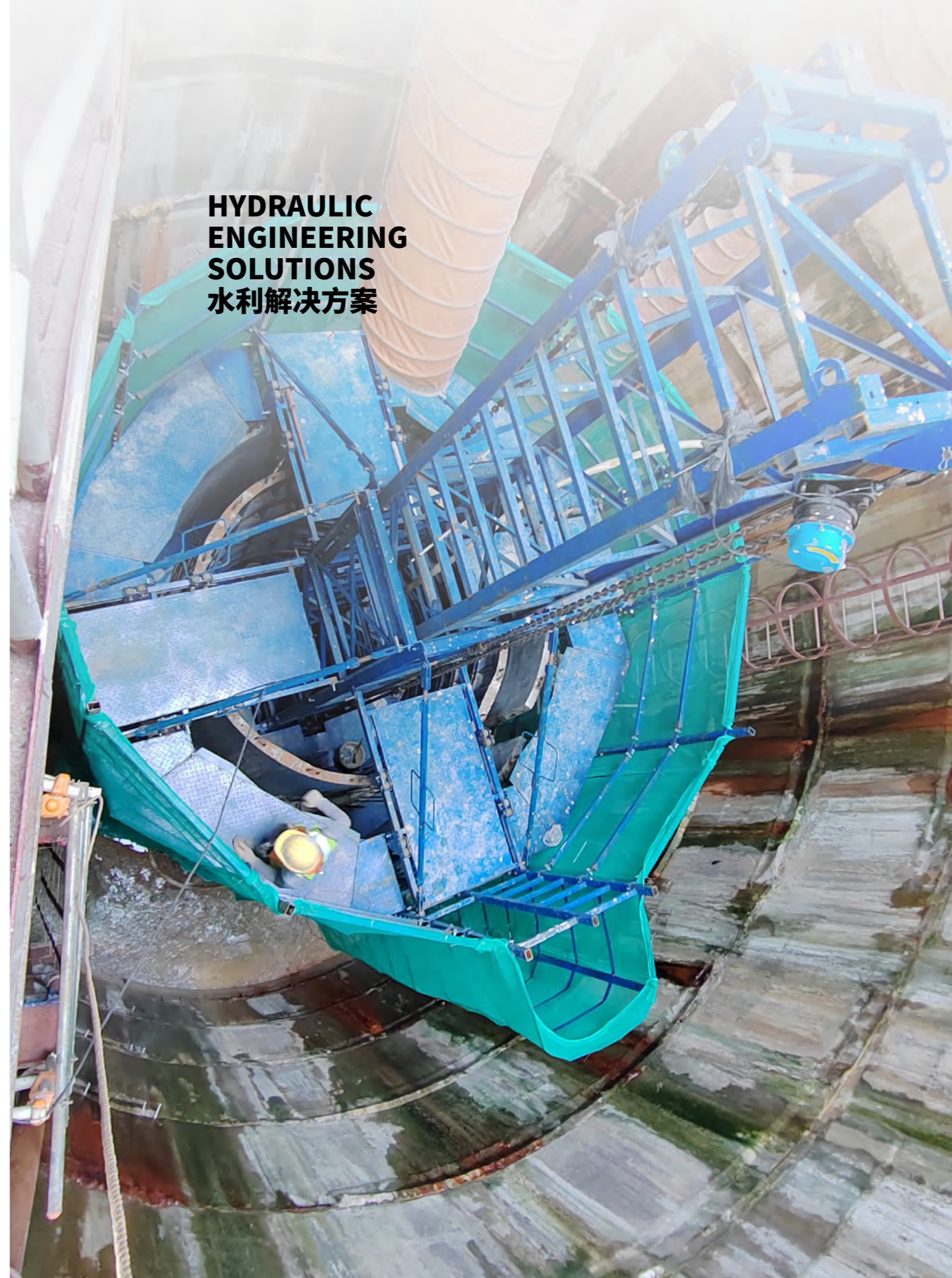
## PREFABRICATED TUNNEL COMPONENTS 隧道预制构件



Prefabricated Tunnel Segment Mold  
预制管片模具



Prefabricated Box Tunnel Mold  
预制箱型隧道模具



HYDRAULIC  
ENGINEERING  
SOLUTIONS  
水利解决方案

## CLIMBING FORMWORK FOR DAM 大坝爬升模板



Single-side Support  
Climbing Formwork  
for Dam  
单侧支撑大坝爬模

It can withstand concrete  
pressure on one side.  
可承受一侧的混凝土压力。

## CLIMBING FORMWORK FOR SHAFT 竖井爬模



## SLIP FORMWORK FOR SHAFT 竖井滑模



## HOISTING CANTILEVER SUPPORT FORMWORK 吊装悬臂支架模板



## DAM AUTOMATIC LIFTING CANTILEVER FORMWORK 大坝自动提升悬臂模板



## HIGHWAY SOLUTION 高速公路解决方案



## Highway Galvanized Corrugated Guardrail 高速公路镀锌波形护栏

As a core infrastructure safety product of GETO Group, the highway galvanized corrugated guardrail features C-channel steel columns, combining high strength, corrosion resistance, and easy installation. It effectively absorbs impact energy during collisions, protecting vehicles and pedestrians, and is widely used in highways, urban expressways, and other transportation projects.

志特集团核心基建安全产品，采用C型槽钢立柱设计，集高强度、耐腐蚀、易安装于一体。碰撞时可有效吸收冲击能量，保障车辆与行人安全，广泛适用于高速公路、城市快速路等交通工程。



## Product Advantages 产品优势

### Superior Material Performance 材质性能卓越

Made of high-quality hot-dip galvanized steel with additional anti-corrosion coating, ensuring long service life even in humid and high-salinity environments.

护栏板采用优质热镀锌钢材，经镀锌+喷塑双重防腐处理，在潮湿、高盐等恶劣环境下仍具备良好的耐久性。

### Optimized Structural Design 结构设计优化

C-channel steel columns enhance stability and load-bearing capacity, while the corrugated panel improves impact resistance and helps guide vehicles back on track after collision.

C型槽钢立柱提升稳定性与承重能力，波形面板结构增强抗冲击性，碰撞后可有效引导车辆回归正常行驶轨迹。

### Efficient Installation 安装高效便捷

Modular design supports quick assembly and disassembly, suitable for container transportation and various construction environments.

模块化设计支持快速拼装与拆卸，适配集装箱运输，适用于多种施工场景。

### Compliance with International Standards 符合国际标准

Meets ISO, AASHTO, and relevant national highway safety standards, with quality certified by professional testing institutions.

满足ISO、AASHTO及相关国家高速公路安全标准，质量经专业检测机构认证，安全可靠。

## Application Scenarios 应用场景



Highways and urban expressways  
高速公路及城市快速路



Interchange ramps and tunnel entrances/exits  
互通立交匝道与隧道出入口



Viaducts and rural highway reconstruction projects  
高架桥及乡村公路改造工程



Industrial parks and scenic area access roads  
工业园区与景区连接线

## Product Specifications 产品规格

ITEM 项目	SPECIFICATION 参数
Material 材质	SS 490
Surface Treatment 表面处理	Hot Dip Galvanized 热浸镀锌
W Beam Size W型钢梁规格	4,320 mm × 310 mm × 2.67T mm
C Channel Post Size C型钢立柱规格	178 mm × 76 mm × 6T mm
Weight – W Beam W型钢梁重量	45.5 Kg
Weight – Post & Packer 立柱与垫板重量	28 Kg & 5.20 Kg
Minimum Yield Strength 最小屈服强度	345 N/mm <sup>2</sup>
Minimum Tensile Strength 最小抗拉强度	483 N/mm <sup>2</sup>
Minimum Elongation 最小伸长率	12 %
Galvanising Specification 热浸镀锌标准	AASHTO DESIGNATION: M 111M/M 111-09BS EN ISO 1461: 2009

## Production Strength 生产实力



## Production Strength 生产实力



## Quality Assurance 品质保证



PROJECT  
CASES  
项目案例



BATANG SARIBAS BRIDGE, MALAYSIA  
马来西亚萨里巴斯大桥



Located in Sarawak, Malaysia, the Batang Saribas Bridge Project has a total length of approximately 4693 meters and a total bridge length of 2390 meters, which is one of the longest bridges with the longest main span of its type in Southeast Asia. It has the characteristics of ultra-long pile foundation in water, large cap platform, high piers, and extra-large span.

萨里巴斯大桥项目位于马来西亚捞越。大桥线路全长约 4693m，桥长 2390 米，是东南亚地区同类型桥梁主跨跨径最长的桥梁之一。桥梁结构具有水中超长桩基、大承台、高墩、特大跨径等特点。

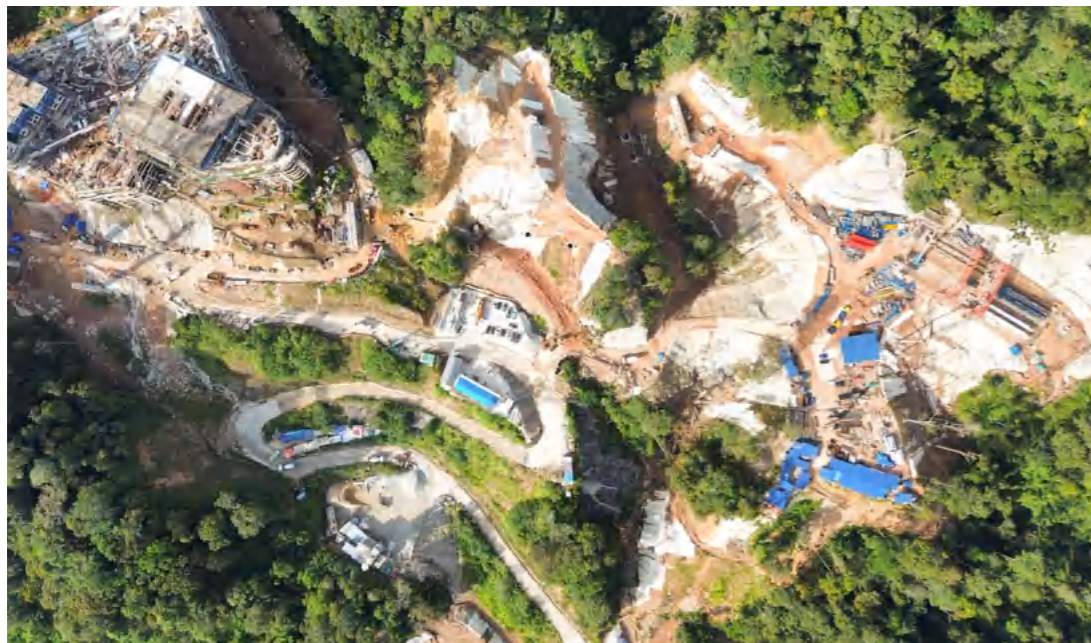
We provided comprehensive bridge solutions for this project, supplying customized steel formwork products including **cofferdam**, **bent cap**, **pier**, **T-beam**, **balanced cantilever bridge**, **apron panel**, **precast barrier**, etc. These reusable and cost-effective systems meet the project's dual demands for quality and efficiency, while our engineering support and service guarantees ensure seamless execution.

我们为该项目提供全面的桥梁解决方案，定制提供了围堰、盖梁、墩柱、T梁、挂篮、裙板、预制护栏等钢模产品，其具有周转率高、经济效益好的特点，能够满足项目对质量和效率的双重要求。同时，我们提供工程技术支持与服务保障。



## GENTING HIGHLANDS MAJOR INFRA PROJECT, MALAYSIA 马来西亚云顶高架桥项目

A 460m mountain viaduct overcoming 50m elevation difference and complex geology, providing professional contracting services and a complete bridge steel formwork system.  
460m 山区高架桥，克服 50m 高差与复杂地质，提供专业承包服务和全套桥梁钢模体系



## ART SMART RAIL, MALAYSIA 马来西亚智能轨道快运系统

It is a significant project of the Sarawak State Government in Malaysia, serving as a critical pillar of the Kuching Urban Transportation System (KUTS). The first phase spans 70 kilometers with 3 routes and 31 stations, focusing on urban bridges using precast beams. The beams vary in length and design.

GETO is executing the Red and Blue lines, with the **Red Line primarily using precast formwork**, while the **Blue Line combines precast and cast-in-place methods (including pile caps, columns, and bent cap formwork)**.

该项目是马来西亚砂拉越州政府的重点项目，将成为古晋城市交通系统（KUTS）的关键支柱。项目第一阶段总长达 70 公里，涵盖 3 条路线、31 个车站，主要为城市桥梁，采用预制梁技术。项目梁型多样，涵盖不同长度和造型的盖梁。

志特负责在建的红线与蓝线工程，其中红线以预制构件模板施工为主，蓝线则结合预制与现场浇筑模式（含承台、柱及盖梁模板）。

### Red Line 红线





Blue Line  
蓝线





✘ Modularizing the formwork and using fastener-type connections for flexible assembly, adapting to various beam types and addressing formwork usage challenges.

✘ Quality service and design support ensure efficient formwork turnover.

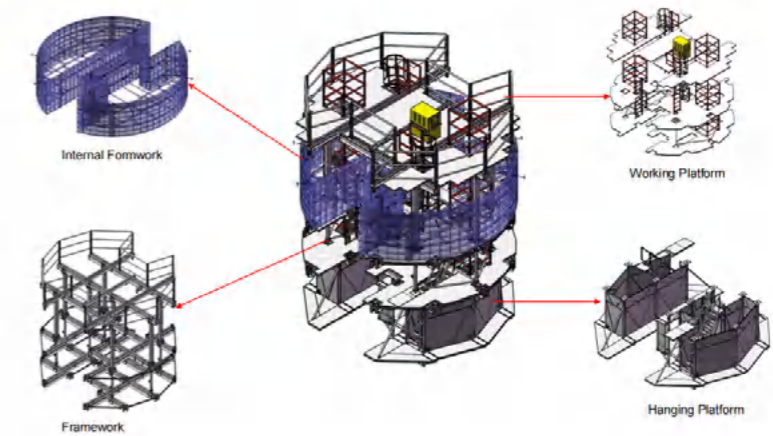
✘ 将模板化整为零，采用扣件式连接，灵活组合，适应各种梁型，有效解决梁型多样化带来的模板使用难题

✘ 优质服务与设计支持，确保模板高效周转

## TUNNEL SHAFT PROJECT, SINGAPORE 新加坡隧道竖井项目

The project contains a 50 km tunnel across the southern and western regions of Singapore. It is an important part of the local drainage integration system. GETO provided the shaft formwork system for this project help to solve the drainage problem.

该项目含 50 公里长的隧道，横跨新加坡南部和西部地区，是当地排水集成系统的重要组成部分。志特为此项目提供竖井模架系统，助力当地解决排水问题。





✧ This product has many advantages such as fast construction speed, high safety, high degree of mechanization, and labor saving.

✧ Each jacking operation only takes 2 to 3 hours.

✧ The steel platform of the top formwork system has large overall rigidity and large bearing capacity. The platform bearing capacity reaches  $10 \text{ kN/m}^2$ .

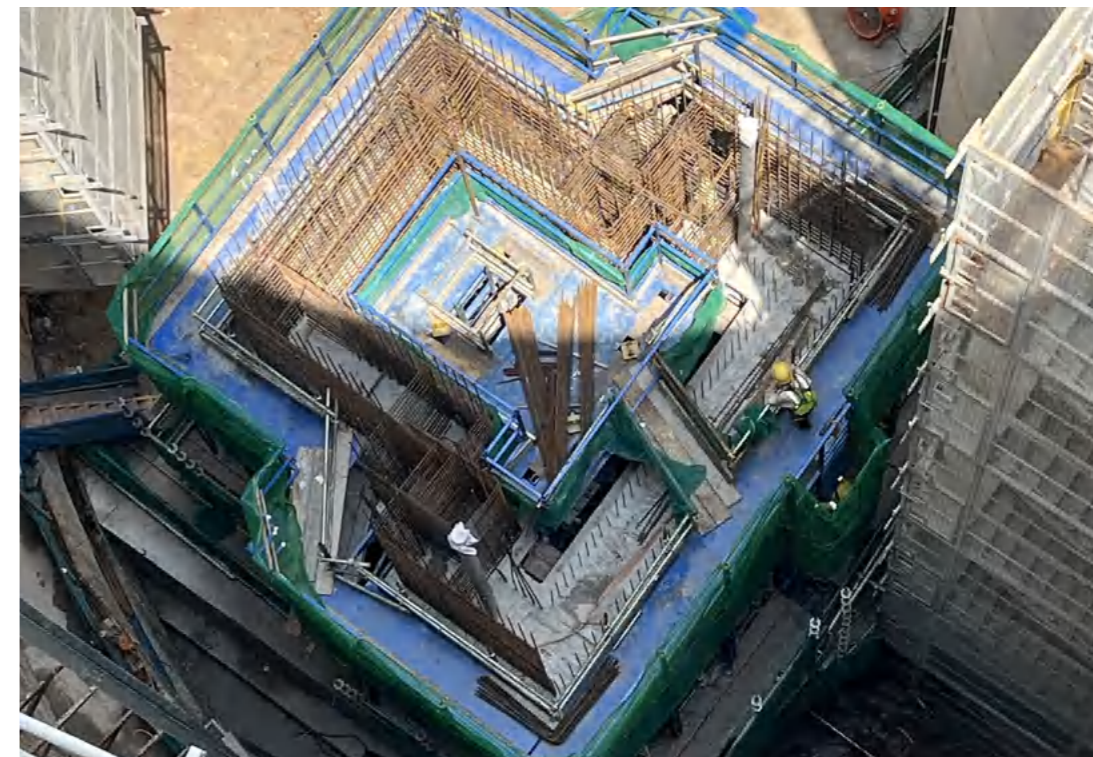
✧ The measurement control points can be directly projected onto the steel platform for construction measurement convenience.

✧ 该产品具有施工速度快、安全性高、机械化程度高、节省劳动力等多项优点

✧ 每次顶升作业用时仅为 2 ~ 3 个小时

✧ 顶模系统钢平台整体钢度大，承载力大，平台承载力达  $10 \text{ kN/m}^2$

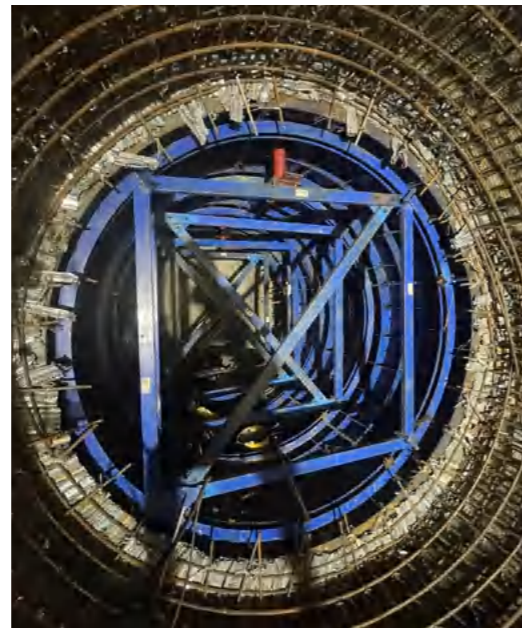
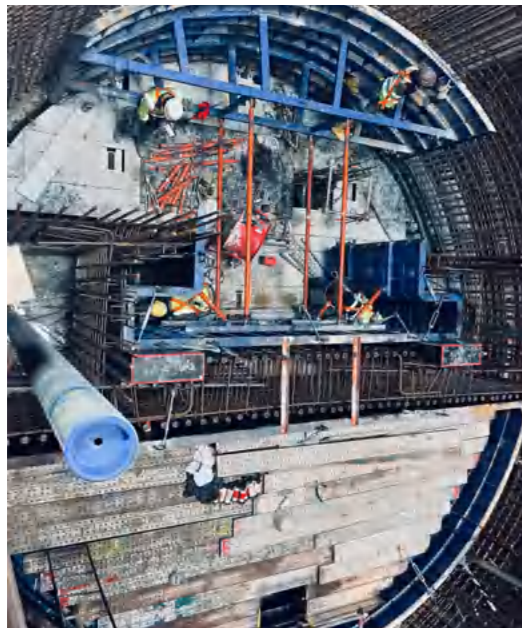
✧ 测量控制点可直接投测到钢平台上，施工测量方便





## TRANSPORTATION PROJECT, NORTH AMERICAN 北美洲交通项目

Prefabricated Guardrails  
预制护栏



## TRANSPORTATION PROJECTS, CHINA 中国交通项目

### Highway Galvanized Corrugated Guardrail 高速公路镀锌波形护栏

#### Mingcun to Dongjiakou Highway Project, China 明村至董家口公路工程

Total supply length:  
130.695 km  
供货全长 130.695 公里



#### Linyi to Linyi Highway Project, China 临淄至临沂高速公路工程

Total supply length:  
192.897 km  
供货全长 192.897 公里



#### Jinan Ring Expressway Second Ring Line West Section, China 济南绕城高速二环线西环段

Total supply length:  
103.973 km  
供货全长 103.973 公里



#### Wushi Branch Project of the Zhanxu Expressway, Guangdong Province, China 广东省湛徐高速公路乌石支线工程

Total supply length:  
22.31 km  
供货全长 22.31 公里



#### Longmen to Huizhou Section of the Shaohui Expressway Project, Guangdong Province, China 广东省韶惠高速公路项目龙门至惠州段工程

Total supply length:  
60.9 km  
供货全长 60.9 公里



## SERVICES 服务



## GETO Group

### Headquarters:

Greater Bay Area—No. 13 Heqing Road, Tsuihang New District, Zhongshan City, Guangdong Province

### Southern China Production Base I :

Cuishan Lake Science and Technology Park, Kaiping, Jiangmen City ,Guangdong Province

### Southern China Production Base II :

Huizhou Industrial Transfer Industrial Park, Huizhou City, Guangdong Province

### Eastern China Production Base I :

Guangchang Industrial Park, Fuzhou City, Jiangxi Province

### Central China Production Base:

Hi-tech Industry Development Zone, Xianning City, Hubei Province

### Northern China Production Base:

China Aluminium Industrial Park, Linqu, Weifang City, Shandong Province

### Southwest China Production Base:

Modern Manufacturing Industrial Park, Tongnan High-Tech District, Chongqing City

### Northwest China Production Base:

The Circular Economy Park, Anding District, Dingxi City, Gansu Province

### Hainan Production Base:

Gold Medal Port Industrial Park, Lingao County, Hainan Province

### ASEAN Production Base:

Negeri Sembilan, Malaysia

### Singapore Production Base :

West Region, Singapore

### Saudi Arabia Production Base:

Riyadh, Saudi Arabia

## Contact

**Sales Hotline:** 0086-760-88589004

**E-mail:** geto\_market@geto.com.cn

**Website:** www.getoformwork.com

20260531V1

